

Preschool Peep 2009-2010



3001 Woodland Ave. Duluth, MN 55803 218-724-6735 fax 218-724-4891
www.hartleynature.org

Hartley Nature Center....

A First Peep at Nature

We are excited for a new school year and a new opportunity to invite you on a fieldtrip to Hartley Nature Center with your preschool-aged children. This Preschool Peep newsletter is made just for preschool teachers and childcare providers to highlight fieldtrip information and the variety of classes we offer. We're happy to customize a class based on the unique needs of your group.

Sing like a songbird, swoop like a dragonfly, track like a bear, fall like a leaf...using a preschoolers natural sense of wonder, trained educators provide opportunities to see, smell, touch and play in the great outdoors. Our preschool classes are 1 to 1 ½ hours long. Classes will begin indoors in our preschool room where we'll introduce our topic then head outside for activities, games and a walk through the park. Bringing along lunch or snack? Classrooms are available indoors; picnic tables are available outdoors.

Interested in Hartley presenting a program at your site? Call for more info. HNC will not cancel your booking due to weather. In the case of especially inclement weather, theme-related indoor activities will be implemented. HNC reserves the right to charge a cancellation fee and/or reschedule a cancelled trip.

When calling 724-6735, please have ready:

School or care provider name

Age & number of students

Number of chaperones

(site staff are free; 1 free parent chaperone/10 students;

All additional chaperones \$4.50 each)

First & Second Choice for Dates

Desired Time

Location: HNC or your site

Contact Name, Address, Phone, Email

Any special needs we should be aware of?

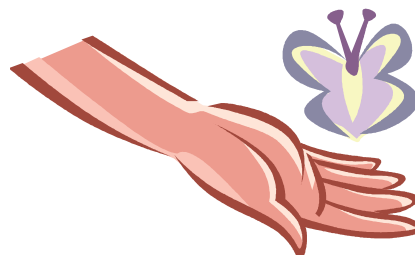
Will you bring your lunch or snack to the center?

Scholarships Available!

Hartley can pay for your transportation!

Open to **all groups** (within our 30 mile primary service area) that utilize yellow bus, vans or other commercial transportation, these funds are limited; first come, first served. Please inquire when making reservations as to availability of funds. After making a reservation, you will be asked to contact the busing company for an estimation of transportation costs. Transportation scholarships can be combined with program scholarships.

Program Scholarships to cover a portion of the program fees are also available. Please call for details.



Additional HNC

Programs for Preschoolers

Nature Nook: weekly program on Mondays and Tuesdays at 10-11:30, open to public just for preschoolers ages 2-5 and an accompanying adult.

Saturday Sprites: monthly Saturday program for preschoolers and an adult. A great time to enjoy the outdoors with other families and learn some ideas of how to share nature with your child.

Wee Wanderers: 3-day **summer and winter** camps for preschoolers and an adult with fun weekly themes like Bugs, Flowers, Art, Snow, and Water.

Please call 724-6735 for more information on these programs.



Early Childhood Class Offerings

Animal Detective brings students into the woods to explore footprints, holes, fur and more as they discover signs of animal life.



Eager Beavers teaches students what makes a beaver so unique. A hike into the park will bring us in sight of a beaver lodge and allow us to act like a beaver.

Bird Buddies teaches students to watch birds using real binoculars. Bird behaviors are taught by observation and “becoming a bird” using props, songs and games.



A Bug’s Life puts sweep nets, probes and magnifying glasses in the hands of jr. bug scientists as we turn over logs and sweep the skies in search of insects and more.

Getting Squirrelly uses one of our most interesting and common critters to learn about what animals need to stay alive. Students look for “lunch spots,” nests and our resident squirrels.



Pollination Station teaches students about how plants grow while inspecting flowers, parachuting pollen, or even planting seeds.

Ponds, Puddles & Polliwogs brings kids to the pond’s edge with rubber boots, nets and buckets. Catch baby dragonflies, frogs and other watery critters.



Snow Wonderful explores the winter wonderland! A walk through the snow allows kids to examine snowflakes, discover animals tracks, and stay warm with age appropriate activities.

Trees are Terrific puts students in the woods where we’ll examine parts of trees, act like a tree, play like squirrels, and toss and sort leaves.

Wonderful Water teaches children how amazing and precious water is to all living things. Together we’ll make a cloud, rainbows and a musical instrument all from water!



Whoop are Owls? will give students a chance to see an owl mount up close, feel their feathers, and hoot out to our special and mysterious owl friends in the forest.

2009-2010 Rates

Type of Fee	Length	Cost	Discounts Available
Early Childhood Program	1 to 1 1/2 hour	\$40 minimum charge (up to 10 students) \$4/student for group larger than 10 students	Bus Scholarship (for transportation) School Scholarship (for program)
Snowshoe Rental for ages 2 and up		\$1.50/student w/ program for snowshoes	
Travel Fees		\$.30/mile/educator	
Mileage Fee		\$.55/mile	



The 2009-10 Preschool teacher newsletter is enclosed